

UNITARY PLAN UPDATE REQUEST MEMORANDUM

Celia Davison, Manager Central and South Planning

TO

FROM

Hamish Scott, Policy Planner, Planning - Central/South

DATE

12 January 2021

SUBJECT





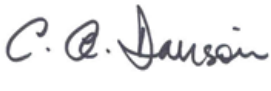
Alteration to a designation in accordance with s181(2) of the Resource Management Act or to the Auckland Unitary Plan (AUP) Operative in part (15 November 2016)



This memorandum requests an update to Auckland Unitary Plan Operative in part

Reason for update – Alteration to designation 4907																									
Chapter	AUP(OP) GIS Viewer Chapter K Designations																								
Section	Schedules and Designations																								
Designation	4907 Beachlands School																								
Locations:	18 and 36 Bell Road, Beachlands																								
Lapse Date	Given effect to (i.e. no lapse date)																								
Purpose	Educational purposes - primary school (years 0 - 8) and may include early childhood education (preschool).																								
Changes to text (shown in underline and strikethrough)	<p>Designation Schedule - Minister of Education (3/3)</p> <p>South</p> <table border="1"> <thead> <tr> <th>Number</th> <th>Purpose</th> <th>Location</th> </tr> </thead> <tbody> <tr> <td>...</td> <td></td> <td></td> </tr> <tr> <td>4907</td> <td>Educational purposes - primary school (years 0 - 8) and may include early childhood education (preschool)</td> <td>18 <u>and</u> 36 Bell Road, Beachlands</td> </tr> <tr> <td>...</td> <td></td> <td></td> </tr> </tbody> </table> <p>4907 Beachlands School</p> <table border="1"> <tr> <td>Designation Number</td> <td>4907</td> </tr> <tr> <td>Requiring Authority</td> <td>Minister of Education</td> </tr> <tr> <td>Location</td> <td>18 <u>and</u> 36 Bell Road, Beachlands</td> </tr> <tr> <td>Rollover Designation</td> <td>Yes</td> </tr> <tr> <td>Legacy Reference</td> <td>Designation 7, Auckland Council District Plan (Manukau Section) 2002</td> </tr> <tr> <td>Lapse Date</td> <td>Given effect to (i.e. no lapse date)</td> </tr> </table> <p>Refer to Attachment 2 for updated text</p>	Number	Purpose	Location	...			4907	Educational purposes - primary school (years 0 - 8) and may include early childhood education (preschool)	18 <u>and</u> 36 Bell Road, Beachlands	...			Designation Number	4907	Requiring Authority	Minister of Education	Location	18 <u>and</u> 36 Bell Road, Beachlands	Rollover Designation	Yes	Legacy Reference	Designation 7, Auckland Council District Plan (Manukau Section) 2002	Lapse Date	Given effect to (i.e. no lapse date)
Number	Purpose	Location																							
...																									
4907	Educational purposes - primary school (years 0 - 8) and may include early childhood education (preschool)	18 <u>and</u> 36 Bell Road, Beachlands																							
...																									
Designation Number	4907																								
Requiring Authority	Minister of Education																								
Location	18 <u>and</u> 36 Bell Road, Beachlands																								
Rollover Designation	Yes																								
Legacy Reference	Designation 7, Auckland Council District Plan (Manukau Section) 2002																								
Lapse Date	Given effect to (i.e. no lapse date)																								
Changes to diagrams	N/A																								
Changes to spatial data	Update Designation Management layer in the GIS Viewer to include the property at 36 Bell Road, Beachlands into the Designation 4907 Beachlands School for Educational Purposes –Primary School (years 0-8) and may include Early Childhood Education (ECE). Refer to Attachment 3 for extent of spatial changes																								

Attachments	<p>Attachment 1: Requiring Authority acceptance letter</p> <p>Attachment 2: Updated text</p> <p>Attachment 3: Updated GIS Viewer</p>
--------------------	---

Prepared by: Hamish Scott (sign off by Fiona Sprott) Policy Planner Planning - Central/South	Text Entered by: Sophia Coulter Planning Technician
Signature: 	Signature: 
Maps prepared by: Aching Konyak Geospatial Analyst	Reviewed by: Fiona Sprott Team Leader Planning - Central/South
Signature: 	Signature: 
Signed off by: Celia Davison Manager Planning – Central and South	
Signature: 	

Attachment 1: Requiring Authority acceptance letter



21 December 2020

Auckland Council
Private Bag 92300
Auckland 1142

Attention: Hamish Scott
Policy Planner, Auckland Council

Dear Hamish

Decision by the Minister of Education to alter Designation 4907 Beachlands School for Educational Purposes – Primary School (years 0-8) and may include Early Childhood Education (ECE) at 18 Bell Road and 36 Bell Road, Beachlands.

On 4 August 2020, the Minister of Education (the Minister) served a Notice of Requirement on Auckland Council to alter the Minister's Designation 4907 for Beachlands School to cover an additional adjacent site located at 36 Bell Road, Beachlands Auckland.

The recommendation of the Commissioner acting under delegated authority from Auckland Council (the Council) was received by the Minister's agent on 15 December 2020. Auckland Council has recommended that the designation be confirmed as set out in Attachment A to the Council's Recommendation Report.

Pursuant to s172(1) of the Resource Management Act 1991 (the Act), the Minister **accepts in full** the Council's recommendation for the following reasons:

1. The designation alteration is reasonably necessary for achieving the objectives of the Minister and will provide for the Beachlands community's social, cultural and economic well-being by enabling additional educational facilities to be established at Beachlands School in the future to serve the educational needs of the growing community in the surrounding catchment.
2. The works enabled by the designation alteration are consistent with Part 2 of the Act in that they will promote the sustainable management of natural and physical resources.
3. The provision of the new primary school and early childhood education as provided for by the designation is consistent with the relevant National Policy Statement for Urban Development and the objectives and policies of the Auckland Unitary Plan (Operative in Part).
4. The designation and associated conditions will avoid, remedy or mitigate adverse environmental effects associated with any works.



The designation shall be included in the Auckland Unitary Plan (Operative in Part) as set out in Attachment A of the Recommendation Report as attached to this decision.

Yours sincerely,



David Bos
Regional Infrastructure Manager – Northern
Under delegated authority from the Minister of Education
T: 09 6329575
E: David.Bos@education.govt.nz

cc. James Puketapu, Senior Delivery Manager, Acquisitions and Designations

Enc.
Attachment A – Amendments to Auckland Unitary Plan maps and text

Attachment A:

- 1. Amend Designation Management layer in the Auckland Unitary Plan's planning maps to include the property at 36 Bell Road, Beachlands (shown in blue) into the Designation 4907 Beachlands School for Educational Purposes –Primary School (years 0-8) and may include Early Childhood Education (ECE).**



- 1. Any consequential amendments required to Chapter K Schedules and Designations - Designation 4907 Educational purposes - primary school (years 0 - 8) and may include early childhood education (preschool) to include 36 Bell Road, Beachlands.**

Attachment 2: Updated text

Designation Schedule - Minister of Education (3/3)

South

Number	Purpose	Location
4900	Educational purposes - primary school (years 0 - 8) and may include early childhood education (preschool)	101 Charles Prevost Drive, The Gardens
4901	Educational purposes - secondary school (years 7 - 13)	550 Porchester Road, Manurewa
4902	Educational purposes - primary school (years 0 - 8) and may include early childhood education (preschool)	16 Swan Crescent, Pakuranga
4903	Educational purposes - secondary school (years 7 - 13)	8 Selfs Road, Papatoetoe
4904	Educational purposes - senior high school (years 11 - 13), special school (years 0 - 13) and may include two(2) early childhood education pre-school(s)	52 Otara Road, Otara
4905	Educational purposes - primary school (years 0 - 8) and may include early childhood education (preschool)	12 Edward Avenue, Otara
4906	Educational purposes - primary school (years 0 - 8) and may include early childhood education (preschool)	21 Baverstock Road
4907	Educational purposes - primary school (years 0 - 8) and may include early childhood education (preschool)	18 and 36 Bell Road, Beachlands
4908	Educational purposes - primary school (years 0 - 8) and may include early childhood education (preschool)	35 Mirrabooka Avenue, Howick
4909	Educational purposes - primary school (years 0 - 8) and may include early childhood education (preschool)	359 Brookby Road, Brookby
4910	Educational purposes - primary school (years 0 - 8) and may include early childhood education (preschool)	247 Bucklands Beach Road, Bucklands Beach
4911	Educational purposes - primary school (years 0 - 8) and may include early childhood education (preschool)	107 Clovelly Road, Bucklands Beach
4912	Educational purposes - primary school (years 0 - 8) and may include early childhood education (preschool)	170 Dawson Road, Flat Bush
4913	Educational purposes - primary school (years 0 - 8) and may include early childhood education (preschool)	187 Coxhead Road, Manurewa
4914	Educational purposes - primary school (years 0 - 8) and may include early childhood education (preschool)	145 Rowandale Avenue, Manurewa

4915	Educational purposes - secondary school (years 7 - 13) and may include early childhood education (preschool)	28 Palmers Road, Clendon Park
4916	Educational purposes - primary school (years 0 - 8) and may include early childhood education (preschool)	15 North Road, Clevedon
4917	Educational purposes - primary school (years 0 - 8) and may include early childhood education (preschool)	10 Sandspit Road, Howick
4918	Educational purposes - primary school (years 0 - 8) and may include early childhood education (preschool)	94 Dawson Road, Otara
4919	Educational purposes - primary school (years 0 - 8) and may include early childhood education (preschool)	196 Preston Road, Otara
4920	Educational purposes - secondary school (years 7 - 13)	32 Edgewater Drive, Pakuranga
4921	Educational purposes - primary school (years 0 - 8) and may include early childhood education (preschool)	46 Gossamer Drive, Pakuranga
4922	Educational purposes - primary school (years 0 - 8) and may include early childhood education (preschool)	64 Everglade Drive, Manukau Heights
4923	Educational purposes - primary school (years 0 - 8) and may include early childhood education (preschool)	14 Butley Drive, Pakuranga
4924	Educational purposes - primary school (years 0 - 8) and may include early childhood education (preschool)	48 Wakefield Road, Mangere
4925	Educational purposes - primary school (years 0 - 8) and may include early childhood education (preschool)	10 Ferguson Road, Otara
4926	Educational purposes - primary school (years 0 - 8) and may include early childhood education (preschool)	85 John Walker Drive, Manurewa
4927	Educational purposes - primary school (years 0 - 8), secondary school (years 7 - 13) and may include early childhood education (preschool)	275-291 Ormiston Road, Flat Bush
4928	Educational purposes - primary school (years 0 - 8) and may include early childhood education (preschool)	20 Flat Bush Road, Otara
4929	Educational purposes - primary school (years 0 - 8) and may include early childhood education (preschool)	27 Greenmeadows Avenue, Manurewa
4930	Educational purposes - primary school (years 0 - 8) and may include early childhood education (preschool)	55 Grande Vue Road, Manurewa
4931	Educational purposes - special school (years 0 - 13) and Te Kura Kaupapa Maori	155 Browns Road, Manurewa

4932	Educational purposes - primary school (years 0 - 8) and may include early childhood education (preschool)	89 Browns Road, Manurewa
4933	Educational purposes - secondary school (years 7 - 13)	25 Sandspit Road, Howick
4934	Educational purposes - primary school (years 0 - 8)	15 Botany Road, Howick
4935	Educational purposes - primary school (years 0 - 8)	40 Willoughby Avenue, Howick
4936	Educational purposes - secondary school (years 7 - 13)	18 Dr Pickering Avenue, Manurewa
4937	Educational purposes - primary school (years 0 - 8) and may include early childhood education (preschool)	6 Imrie Avenue, Mangere
4938	Educational purposes - junior high school (years 7-10) and may include early childhood education (preschool)	103-123 Jeffs Road, Flat Bush
4939	Educational purposes - primary school (years 0 - 8) and may include early childhood education (preschool)	181 Portage Road, Papatoetoe
4940	Educational purposes - secondary school (years 7 - 13)	51 Othello Drive, Wiri
4941	Educational purposes - primary school (years 0 - 8) and may include early childhood education (preschool)	54 Raglan Street, Mangere East
4942	Educational purposes - primary school (years 0 - 8) and may include early childhood education (preschool)	71 Robertson Road, Mangere East
4943	Educational purposes - primary school (years 0 - 8) and may include early childhood education (preschool)	7 Dr Pickering Avenue, Manurewa
4944	Educational purposes - secondary school (years 7 - 13)	32 Macleans Road, Bucklands Beach
4945	Educational purposes - primary school (years 0 - 8)	10 Wycherley Drive, Bucklands Beach
4946	Educational purposes - primary school (years 0 - 8) and may include early childhood education (preschool)	2 Domain Road, Mangere Bridge
4947	Educational purposes - primary school (years 0 - 8) and may include early childhood education (preschool)	244 Kirkbride Road, Mangere
4948	Educational purposes - secondary school (years 7 - 13)	51 Bader Drive, Mangere
4949	Educational purposes - primary school (years 0 - 8) and secondary school (years 7-13) and may include early childhood education (preschool)	21 Yates Road, Mangere
4950	Educational purposes - primary school (years 0 - 8) and secondary school (years 7 - 13) and may include early childhood education (preschool)	253 Buckland Road, Mangere

4951	Educational purposes - primary school (years 0 - 8) and may include early childhood education (preschool)	4 Hill Road, Manurewa
4952	Educational purposes - primary school (years 0 - 8) and may include early childhood education (preschool)	14 Scotts Road, Manurewa
4953	Educational purposes - secondary school (years 7 - 13) and may include early childhood education (preschool)	61 and 67 Browns Road, Manurewa
4954	Educational purposes - primary school (years 0 - 8) and may include early childhood education (preschool)	76 Russell Road, Manurewa
4955	Educational purposes - primary school (years 0 - 8) and may include early childhood education (preschool)	37 Tawa Crescent, Manurewa
4956	Educational purposes - primary school (years 0 - 8) and may include early childhood education (preschool)	29 McKean Avenue, Manurewa
4957	Educational purposes - primary school (years 0 - 8)	154 Maraetai Drive, Maraetai Beach
4958	Educational purposes - primary school (years 0 - 8) and may include early childhood education (preschool)	12 Pearl Baker Drive, Otara
4959	Educational purposes - primary school (years 0 - 8)	140 Mellons Bay Road, Howick
4960	Educational purposes - primary school (years 0 - 8) and may include early childhood education (preschool)	81 Mountain Road, Mangere
4961	Educational purposes - primary school (years 0 - 8) and may include early childhood education (preschool)	60 Mascot Avenue, Mangere
4963	Educational purposes - primary school (years 0 - 8) and may include early childhood education (preschool)	275 Orere Point Road
4964	Educational purposes - primary school (years 0 - 8)	85 Nelson Street, Howick
4965	Educational purposes - secondary school (years 7 - 13) and may include early childhood education (preschool)	500 Pakuranga Road, Highland Park
4966	Educational purposes - primary school (years 0 - 8) and may include early childhood education (preschool)	77 Udys Road, Pakuranga
4967	Educational purposes - primary school (years 0 - 8) and may include early childhood education (preschool)	45 Reeves Road, Pakuranga
4968	Educational purposes - primary school (years 0 - 8) and may include early childhood education (preschool)	317 Great South Road, Papatoetoe
4969	Educational purposes - primary school (years 0 - 8) and may include early childhood education (preschool)	107 Tui Road, Papatoetoe

4970	Educational purposes - secondary school (years 7 - 13) and may include early childhood education (preschool)	138 Tui Road, Papatoetoe
4971	Educational purposes - secondary school (years 7 - 13)	175 Motatau Road, Papatoetoe
4972	Educational purposes - primary school (years 0 - 8) and may include early childhood education (preschool)	25 Graeme Avenue, Papatoetoe
4973	Educational purposes - primary school (years 0 - 8) and may include early childhood education (preschool)	58 Milan Road, Papatoetoe
4974	Educational purposes - primary school (years 0 - 8) and may include early childhood education (preschool)	24 Station Road, Papatoetoe
4975	Educational purposes - secondary school (years 7 - 13)	25 Loloma Drive, Bucklands Beach
4976	Educational purposes - secondary school (years 7 - 13)	25 Kilkenny Drive, Howick
4978	Educational purposes - primary school (years 0 - 8)	94 Golfland Drive, Howick
4979	Educational purposes - secondary school (years 7 - 13)	575 Chapel Road, Howick
4980	Educational purposes - primary school (years 0 - 8) and may include early childhood education (preschool)	116 Puhinui Road, Papatoetoe
4981	Educational purposes - primary school (years 0 - 8) and may include early childhood education (preschool)	66 Riverton Drive, Manurewa
4982	Educational purposes - primary school (years 0 - 8) and may include early childhood education (preschool)	47 Diorella Drive, Manukau
4983	Educational purposes - primary school (years 0 - 8)	13 Waikaremoana Place, Pakuranga
4984	Educational purposes - primary school (years 0 - 8)	30 Millen Avenue, Pakuranga
4985	Educational purposes - primary school (years 0 - 8) and may include early childhood education (preschool)	203 Robertson Road, Mangere
4986	Educational purposes - primary school (years 0 - 8) and may include early childhood education (preschool)	20 Rongomai Road, Otara
4987	Educational purposes - primary school (years 0 - 8) and may include early childhood education (preschool)	23 Burundi Avenue, Manurewa
4988	Educational purposes - primary school (years 0 - 8) and may include early childhood education (preschool)	73 Rowandale Avenue, Manurewa

4989	Educational purposes - primary school (years 0 - 8) and may include early childhood education (preschool)	11 Sunnyview Avenue, Howick
4990	Educational purposes - primary school (years 0 - 8) and may include early childhood education (preschool)	6 Court Town Close, Mangere
4991	Educational purposes - secondary school (years 7 - 13) and may include early childhood education (preschool)	2 Franklyne Road, Otara
4992	Educational purposes - special school (years 0 - 13)	33 Robertson Road, Mangere
4993	Educational purposes - intermediate school (years 7 - 8)	39 Somerville Road, Howick
4994	Educational purposes - primary school (years 0 - 8) and may include early childhood education (preschool)	10 McNaughton Avenue, Mangere
4995	Educational purposes - primary school (years 0 - 8)	16 Fordyce Avenue, Pakuranga
4996	Educational purposes - primary school (years 0 - 8) and may include early childhood education (preschool)	89 Vine Street, Mangere
4997	Educational purposes - secondary school (years 7 - 13)	68 Dawson Road, Flat Bush
4998	Educational purposes - kura kaupapa Māori (years 0 - 13) and may include early childhood education (preschool)	7 Comet Crescent, Mangere
4999	Educational purposes - primary school (years 0 - 8) and may include early childhood education (preschool)	21 Trounson Avenue, Manurewa
5000	Educational purposes - primary school (years 0 - 13) and may include early childhood education (preschool)	206 Finlayson Avenue, Weymouth
5001	Educational purposes - primary school (years 0 - 8) and may include early childhood education (preschool)	65 Viscount Street, Mangere
5002	Educational purposes - primary school (years 0 - 8) and may include early childhood education (preschool)	16 Butley Drive, Pakuranga
5003	Educational purposes - primary school (years 0 - 8) and may include early childhood education (preschool)	17 House Avenue, Mangere
5004	Educational purposes - primary school (years 0 - 8) and may include early childhood education (preschool)	15 Scotsmoor Drive, Wattle Downs
5005	Educational purposes - primary school (years 0 - 8) and may include early childhood education (preschool)	44 Palmers Road, Weymouth

5006	Educational purposes - primary school (years 0 - 8) and may include early childhood education (preschool)	516 Weymouth Road, Weymouth
5007	Educational purposes - primary school (years 0 - 8) and may include early childhood education (preschool)	56 Middlefield Drive, Manukau
5008	Educational purposes - primary school (years 0 - 8) and may include early childhood education (preschool)	23 Inverell Avenue, Manurewa
5009	Educational purposes - primary school (years 0 - 8) and may include early childhood education (preschool)	77 Wymondley Road, Otara
5010	Educational purposes - primary school (years 0 - 8) and may include early childhood education (preschool)	226 Bairds Road, Otara
5011	Educational purposes - primary school (years 0 - 8) and may include early childhood education (preschool)	1373 Alfriston Road, RD 1 Ardmore
5012	Educational purposes - primary school (years 0 - 8) and may include early childhood education (preschool)	599 Papakura-Clevedon Road, Ardmore
5013	Educational purposes - primary school (years 0 - 8) and may include early childhood education (preschool)	70 Walter Strevens Drive, Conifer Grove
5014	Educational purposes - primary school (years 0 - 8) and may include early childhood education (preschool)	10 Cosgrave Road, Papakura
5015	Educational purposes - primary school (years 0 - 8) and may include early childhood education (preschool)	23-33 Young Crescent, Drury
5016	Educational purposes - primary school (years 0 - 8) and may include early childhood education (preschool)	67 Settlement Road, Papakura
5017	Educational purposes - primary school (years 0 - 8) and may include early childhood education (preschool)	171 Hingaia Road, Hingaia
5018	Educational purposes - primary school (years 0 - 8) and may include early childhood education (preschool)	76 Kelvin Road, Papakura
5019	Educational purposes - primary school (years 0 - 8) and may include early childhood education (preschool)	12A Tasman Drive, Papakura
5020	Educational purposes - primary school (years 0 - 8) and may include early childhood education (preschool)	23 and 29 Ray Small Drive, Papakura
5021	Educational purposes - intermediate school (years 7-8) and may include early childhood education (preschool)	3 Willis Road, Papakura

5022	Educational purposes - primary school (years 0 - 8) and may include early childhood education (preschool)	50 Settlement Road, Papakura
5023	Educational purposes - primary school (years 0 - 8) and may include early childhood education (preschool)	143 Porchester Road, Takanini
5024	Educational purposes - primary school (years 0 - 8) and may include early childhood education (preschool)	44-58 Beach Road, Papakura
5025	Educational purposes - primary school (years 0 - 8) and may include early childhood education (preschool)	38 Park Estate Road, Papakura
5026	Educational purposes - primary school (years 0 - 8) and may include early childhood education (preschool)	14 Mack Place, Papakura
5027	Educational purposes - primary school (years 0 - 8), secondary school (years 7 - 13) and may include early childhood education (preschool)	5-11 Edinburgh Avenue, Papakura
5028	Educational purposes - primary school (years 0 - 8) and may include early childhood education (preschool)	39 Takanini School Road, Takanini
5029	Educational purposes - primary school (years 0 - 8) and may include early childhood education (preschool)	7 Steel Road, Ararimu
5030	Educational purposes - primary school (years 0 - 8) and may include early childhood education (preschool)	14 Matakawau Road, RD 4 Waiuku
5031	Educational purposes - primary school (years 0 - 8) and may include early childhood education (preschool)	35 Paparata Road, Bombay
5032	Educational purposes - primary school (years 0 - 8) and may include early childhood education (preschool)	72 George Crescent, Buckland
5033	Educational purposes - primary school (years 0 - 8) and may include early childhood education (preschool)	459 Glenbrook Waiuku Road, Glenbrook
5034	Educational purposes - primary school (years 0 - 8) and may include early childhood education (preschool)	43 Lockwood Road, RD 3 Papakura
5035	Educational purposes - primary school (years 0 - 8) and may include early childhood education (preschool)	12 Blackbridge Road, Papakura
5036	Educational purposes - primary school (years 0 - 8) and may include early childhood education (preschool)	389 Union Road, RD 3 Mauku
5037	Educational purposes - primary school (years 0 - 8) and may include early childhood education (preschool)	35 Tuhimata Road, Paerata
5038	Educational purposes - primary school (years 0 - 8) and may include early childhood education (preschool)	3 Matheson Road, RD 3, Paparimu

5039	Educational purposes - special school (years 0 - 13)	180 Wellington Street, Pukekohe
5040	Educational purposes - primary school (years 0 - 8) and may include early childhood education (preschool)	38 Patumahoe Road, Patumahie
5041	Educational purposes - primary school (years 0 - 8) and may include early childhood education (preschool)	10 France Street, Waiuku
5042	Educational purposes - primary school (years 0 - 8) and may include early childhood education (preschool)	137-143 Runciman Road, Pukekohe
5043	Educational purposes - primary school (years 0 - 8) and may include early childhood education (preschool)	12 Green Lane, Pukekohe
5044	Educational purposes - primary school (years 0 - 8) and may include early childhood education (preschool)	44 Queen Street, Pukekohe
5045	Educational purposes - primary school (years 0 - 8) and may include early childhood education (preschool)	29 Princes Street, Pukekohe
5046	Educational purposes - primary school (years 0 - 8) and may include early childhood education (preschool)	357 Waiuku Road, RD 3 Puni
5047	Educational purposes - primary school (years 0 - 8) and may include early childhood education (preschool)	126 Ararimu Road, RD 3 Drury
5048	Educational purposes - primary school (years 0 - 8) and may include early childhood education (preschool)	60 Sandspit Road, Waiuku
5049	Educational purposes - secondary school (years 7 - 13) and may include early childhood education (preschool)	14 Harris Street, Pukekohe
5050	Educational purposes - primary school (years 0 - 8) and may include early childhood education (preschool)	767-771 Linwood Road, Papakura
5051	Educational purposes - secondary school (years 7 - 13)	43 Constable Road, Waiuku
5052	Educational purposes - primary school (years 0 - 8) and may include early childhood education (preschool)	42 East Street, Pukekohe
5053	Educational purposes - primary school (years 0 - 8) and may include early childhood education (preschool)	16 View Road, Waiuku
5054	Educational purposes - primary school (years 0 - 8) and may include early childhood education (preschool)	571 Waiau Pa Road, Kingseat
5055	Educational purposes - primary school (years 0 - 8) and may include early childhood education (preschool)	88A Creamery Road, RD 3 Waiuku
5056	Educational purposes - primary school (years 0 - 8) and may include early childhood education (preschool)	181 – 191 Walters Road, Takanini

5057	Educational purposes - primary school (years 0 - 8) and may include early childhood education (preschool)	Jutland Road (Lot 2 DP84292), Pukekohe
5058	Educational Purposes – primary school (years 0 to 8) and may include Early Childhood Education (preschool) (ECE Facility)	187 Flat Bush School Road, Flat Bush
5059	Educational purposes – Kura Kaupapa Maori and Wharekura (Years 0-13), Kohanga Reo and Early Childhood Education (ECE)	163 and 181 Browns Road, Manurewa
5060	School Road Access	163 Browns Road, Manurewa
5061	Educational Purposes – primary school (years 0 to 8) and may include Early Childhood Education (preschool)	741 Paerata Road, Paerata
5062	Educational Purposes – primary school (years 0 to 8) and Early Childhood Education (preschool)	41 Burberry Road and part of 138, 160 and 260 Bremner Road, Drury West
5063	Educational Purposes – primary school (years 0 to 8) and Early Childhood Education (preschool)	200 and 252 Park Estate Road, Hingaia

4907 Beachlands School

Designation Number	4907
Requiring Authority	Minister of Education
Location	18 and 36 Bell Road, Beachlands
Rollover Designation	Yes
Legacy Reference	Designation 7, Auckland Council District Plan (Manukau Section) 2002
Lapse Date	Given effect to (i.e. no lapse date)

Purpose

Educational purposes - primary school (years 0 - 8) and may include early childhood education (preschool).

Conditions

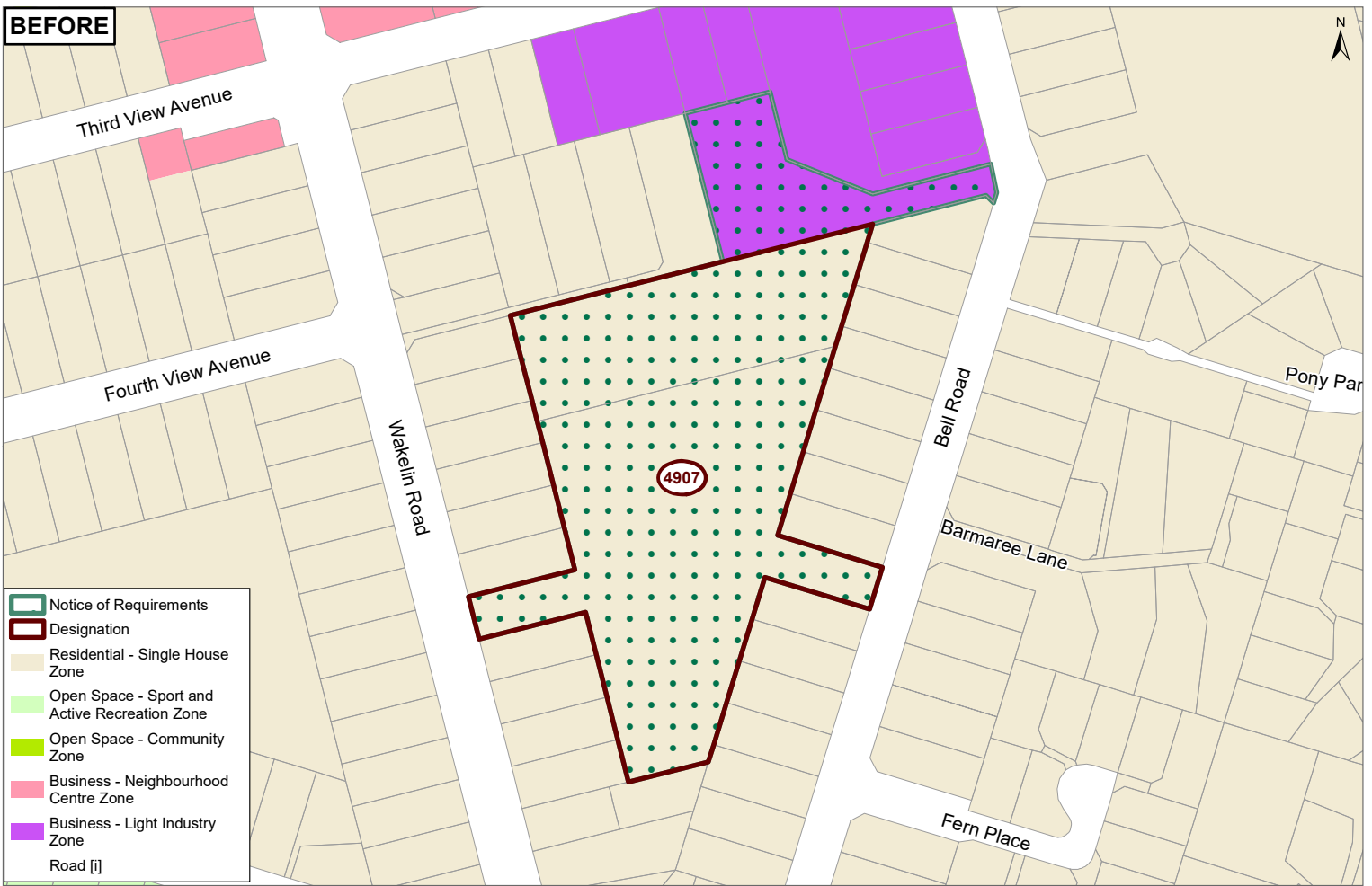
The standard conditions for all Minister of Education designations apply to this designation.

Attachments

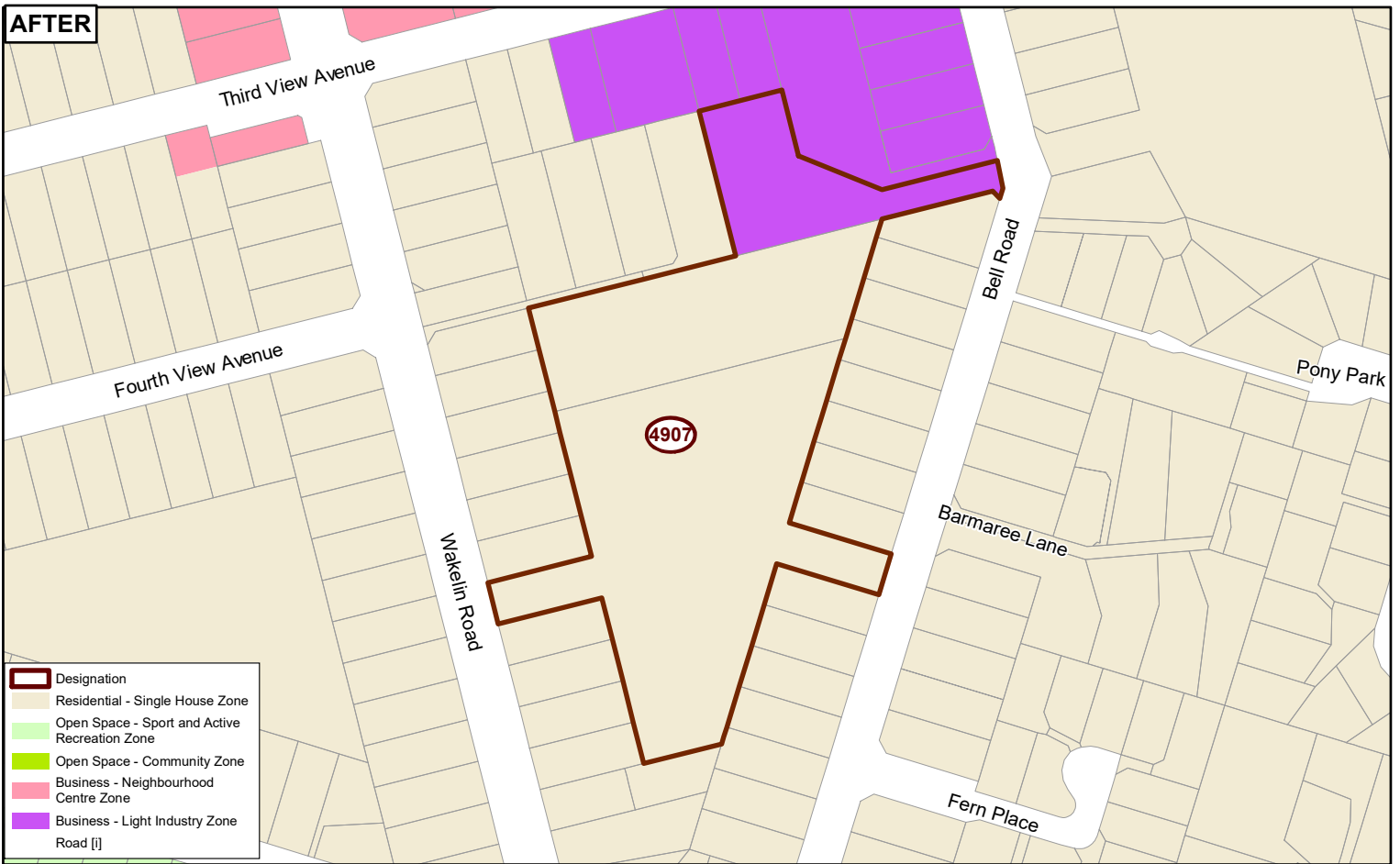
No attachments.

Attachment 3: Updated GIS Viewer

BEFORE



AFTER



0 25 50 100 Metres

Whilst due care has been taken, Auckland Council gives no warranty as to the accuracy and completeness of any information on this map/plan and accepts no liability for any error, omission or use of the information.

Date: 3/12/2020

Alteration to Designation - ID 4907